



*Welcome Valued Guest! We have provided you with a few complimentary items to get you through your first night's stay. Feel free to ask any Lodging team member if you need any of these items replenished. If you forgot to pack any other toiletry item, please come see us at the front desk. We should have what you need available for purchase.*

***The Air Force Inns Promise:*** "Our goal is to provide you a clean, comfortable room to guarantee a good night's rest and pleasant stay. If any part of your stay with us is not satisfactory, please provide the lodging manager or front desk staff an opportunity to 'make it right'."



Dear Guest,

Welcome to the Fairchild Inn - Fairchild Air Force Base, Washington!

We are so delighted and honored to have you with us. We are committed to providing you with the highest level of service and accommodations to make your stay relaxing and enjoyable.

We offer free Wi-Fi service to all our guests and it is available in all our facilities. We also provide complimentary coffee, tea and hot chocolate in our lobbies along with a few complimentary items in the room to make your stay a pleasant one.

Your feedback is very important to us, so we welcome any comments that you might have to help us "make it right."

Should you require any additional service or information during your stay with us, please do not hesitate to contact the front desk or me at ext. 2105.

Again, thank you for choosing Fairchild Inn. Enjoy your stay!

Sincerely,

Lodging Management Team

# EMERGENCY CONTACTS

## **92<sup>nd</sup> Security Forces**

2071 Arnold Street  
Fairchild Air Force Base  
(509) 247-5493

DIRECTIONS: From main gate go straight onto Mitchell St, follow to Bong St. Turn right onto Strategic Air Command Blvd. At stop sign Security Forces will be on your left.

## **Airway Heights Police Department**

1307 S. Ziegler St.  
Airway Heights, WA  
(509) 244-3707

DIRECTIONS: From Exiting main gate make a Right turn towards Airway Heights Hwy2. Follow US2 to S. Ziegler St. Your destination will be on the left.

## **FAFB Fire Department**

1001 W Boston Avenue  
Fairchild Air Force Base  
(509) 247-5215

DIRECTIONS: From main gate go straight onto Mitchell St, follow to Bong St.at the stop sign turn Left. Make a right turn onto Arnold St. Turn Left on O'Malley Rd.

## **FAFB Medical Clinic**

701 Hospital Loop, Suite 307  
Fairchild Air Force Base  
(509) 247-2361

DIRECTIONS: From main gate make a right onto Fairchild St. Go straight until you get to Offutt Pkwy make a Right. Turn Left onto S. Graham Rd the Clinic will be on your right.

## **Urgent Cares**

### **Providence Main Clinic**

421 S. Division St.  
Spokane, WA  
(509) 474-2100

DIRECTIONS: From Exiting main gate make a Right turn towards Airway Heights Hwy2 go through Airway Heights. Take I-90-E towards Spokane. Take exit 281 to 5<sup>th</sup> & Division. It's on the corner.

### **Rockwood Main Clinic**

400 East Fifth Avenue  
Spokane, WA  
(509) 838-2531

DIRECTIONS: From Exiting main gate make a Right turn towards Airway Heights Hwy2 go through Airway Heights. Take I-90-E towards Spokane. Then take exit 281 to 5<sup>th</sup> St. keep going straight. Rockwood Clinic will be on your Right.

## **Hospitals**

### **Deaconess Medical Center**

800 West Fifth Avenue  
Spokane, WA  
(509) 473-5800

DIRECTIONS: From Exiting main gate make a Right turn towards Airway Heights Hwy2 go through Airway Heights. Take I-90-E towards Spokane. Take exit 280 Maple St Exit, keep going straight until Monroe St. Make a Right turn. Deaconess will be on your Left.

### **Providence Holy Family Hospital**

5633 N. Lidgerwood St.  
Spokane, WA  
509-482-0111

DIRECTIONS: From Exiting main gate make a Right turn towards Airway Heights Hwy2 go through Airway Heights. Take I-90-E towards Spokane. Take exit 281 Make a Left on Division. Go straight down Division St. until you get to W. Central Ave. make a Right turn. Holy Family will be on your Right.

### **Providence Sacred Heart Hospital**

105 W 8th Avenue  
Spokane, WA  
(509) 474-3131

DIRECTIONS: From Exiting main gate make a Right turn towards Airway Heights Hwy2 go through Airway Heights. Take I-90-E towards Spokane. Take exit 281 Make a Right on S. Division. Go Right on 8<sup>th</sup> and follow signs.

## **Dental**

### **FAFB Dental Clinic**

701 Hospital Loop  
Fairchild AFB, WA  
(509) 247-5829

DIRECTIONS: From main gate make a right onto Fairchild St. Go straight until you get to Offutt Pkwy make a Right. Turn Left onto S. Graham Rd the Clinic will be on your right.

### **Airway Heights Dental Clinic**

13326 W. Sunset Hwy  
Airway Heights, WA  
(509)244-3655

DIRECTIONS: From Exiting main gate make a Right turn towards Airway Heights Hwy2. Follow US2 to S. Ziegler St. Your destination will be on the left.

### **West Plains Dental Clinic**

9713 W. Sunset Hwy  
Airway Heights, WA  
(509) 456-4220

DIRECTIONS: From Exiting main gate make a Right turn towards Airway Heights Hwy2. Follow US2. After Traffic circle take 2<sup>nd</sup> exit to the Right

***In an emergency situation, please call 911***



## **ROOM RATES**

**VAQ \$79.00**  
**VQ \$94.00**  
**TLF \$101.00**  
**DVQ \$101.00**  
**LARGE DVQ \$101.00**

**PET FRIENDLY TLF ADDITIONAL \$10.00**

**CHECK-OUT TIME: 1100**

**CHECK-IN TIME: 1400**

**ALL ROOMS ARE NON-SMOKING**

**RETURN CHECK FEE \$50.00**

### **Pet Fees**

Pets are prohibited except in rooms designated as Pet Friendly units. Guest may be charged up to a \$150.00 cleaning fee based on expenses incurred to return the room to available inventory when pet friendly TLFs require extraordinary cleaning or incur damages AFMAN 34-135, para 3.18.3.

### **Smoking Fees**

Smoking is prohibited in all lodging facilities. A cleaning fee of up to \$150.00 will be assessed if indication of smoking is discovered. AFMAN 34-135, para 3.5.1.

### **Excess Cleaning Fees**

If upon your checkout, the room is left a mess, or there are damages, you may be charged an additional cleaning fee, as well as fair wear and tear replacement costs for lodging property. Please do not leave excessive trash upon check out as you may be charged additional cleaning fees. AFMAN 34-135, para 3.5.4.

### **Checkout Time 1100 AM**

*Note: Should you require a late checkout, please contact the front desk by dialing 0. Please be aware that this may generate a late checkout fee, which is full room rate. AFMAN 34-135, para 5.6.9.*

## **GUEST SERVICES**

### **Fax Service**

Official/local fax service to DSN numbers is available at the front desk. Additional services are available at the Education Center at 247-2348 or Library at 247-5556.

### **Fitness Rooms**

Bldg 2392 - Basement

Bldg 1252 - 1st floor

*Note: Guests under 18 years of age must be accompanied by an adult.*

### **Sundry**

Available at the Front Desk for purchase

### **Ice Machines**

Bldg 2272 - basement laundry room

Bldg 2392 - 2nd floor

Bldg 2399 - laundry room

Bldg 1252 - all floors

### **Laundry Rooms**

All lodging facilities are equipped with washers and dryers. See building floor plans for locations.

### **Smoking Area**

Designated Smoking Area is located on the side of Bldg 2399 by the picnic table. Please see "Map" tab to find the designated area.

### **Business Centers**

Internet and printer services are available in Business Centers, located in Bldg 1252 (Survival) and Bldg 2392 (Main Base). Official/local fax and copy services are available at the front desk 24/7.

### **Conference Room**

Conference room is located in Bldg 2392 and is available for use by lodging guests.

## **HOUSEKEEPING SERVICE**

Housekeeping service is provided 7 days a week from 0800 to 1400 unless a “Do Not Disturb” sign is displayed. Guests must allow housekeeping to access their rooms at least once every three days. Housekeeping must enter pet friendly units daily.

### **DAILY SERVICES**

Clean and empty wastebaskets  
Restock Amenities  
Clean floors and carpet  
Clean Toilet  
Make beds  
Clean vanities, sinks, mirrors, showers and tubs  
Replace towels on floor

### **WEEKLY SERVICES**

Change sheets and pillow cases  
Make bed  
Light dusting  
Change shower curtain  
Clean doors

Housekeeping does not touch personal belongings. Please place personal belongings in the closet or on the luggage rack. Contact the front desk for specialized cleaning service.

## **GUEST RESPONSIBILITIES**

In order to ensure the comfort and safety of all our guests, we ask that you please abide by the following guidelines:

- Weapons and ammunition are prohibited.
- Cooking is only permitted in rooms with cooking appliances. Use of hot plates is strictly prohibited.
- Do not store flammable liquids in your room.
- All pots, pans, dishes and utensils must be washed by guest during their stay.



## TELEPHONE DIALING INSTRUCTIONS FOR EMERGENCY DIAL 911

Room to Room	Dial room extension
Front Desk	0
Base Operator	99 + 0
On Base Calls	99 + XXX--XXXX
CONUS DSN	97 + 94 + DSN
OCONUS DSN	Use Lobby phone in Bldg. 2392
Local	99 + 509 + local number
Toll Free/800/844/855/866/877/888 etc	99 +1+ Number
Direct Dial Long Distance (\$0.10/min)	99 + 1 + Area Code + Number
Long Distance Collect	0 + calling card & collect 99 + area code + number
International <small>(rates are available at the front desk)</small>	99 + 011 + country code + number
International Collect	99 + 01 + Number Wait for operator

### TO REGISTER/CHANGE AUTOMATIC WAKEUP

Dial 73050 and follow the prompts to set a wakeup call.

#### To Cancel Automatic Wakeup:

Dial 73050, press 2 to cancel the wakeup call.

#### To Retrieve Messages From Your Telephone Mail Box:

To retrieve and / or delete messages from your room dial **6000** and follow the voice prompts.

(Note: if you have a Cisco Phone you may just press the message button)

**Please DO NOT unplug the phone cable.**

## ON BASE DINING

**Alder House Pub and Grill**-10 W. Ent St., FAFB

**509-247-5053**

DIRECTIONS: From Lodging make a left turn onto Fairchild St. At stop sign make your first right and it will be on your left. Café is Located in the back ½ of the Red Morgan Building

**Burger King**-Fairchild St., FAFB

**509-244-2680**

DIRECTIONS: From lodging make a left turn. Go straight Burger King will be on your right.

**Final Point**-1010 W. Survival Loop, FAFB

**509-244-2865**

DIRECTIONS: Turn right onto Fairchild St, Right on Eaker Ave. Turn right onto Mitchell St, then turn left onto Eaker Ave, turn right on Oak St. Keep going straight, at the railroad tracks make a right turn. Go around flight line. Keep going straight around lodging and it will be the first building on your right.

**Flight Kitchen**-100 West Bong. FAFB

**509-247-2614**

DIRECTIONS: From Lodging make a left turn. At Sac Boulevard make a left turn. At stop sign make a right onto Bong St. Dining Facility will be on your right.

**Food Court**-101 W. Spaatz Rd., FAFB

**509-244-6596**

DIRECTIONS: From lodging make a left turn. At Sac Boulevard make a right turn it is straight ahead on your left inside BX.

**Sgt. Roger A. Ross Memorial Dining**-1020 W. Survival Loop, FAFB

**509-247-5553**

DIRECTIONS: Turn right onto Fairchild St, turn right on Eaker Ave, Turn right onto Mitchell St, then turn left onto Eaker Ave, turn right on Oak St. Keep going straight, at the railroad tracks make a right turn. Go around flight line. At the stop sign keep going straight and the Dining Facility will be on your right.

**Fairchild Warrior Dining Facility**- 100 W. Bong St., FAFB

**509-247-5353**

DIRECTIONS: From Lodging make a left turn. At Sac Boulevard make a left turn. At stop sign make a right onto Bong St. Dining Facility will be on your right.

## LOCAL DINING

### Area Code 509

**Atilantos Mexican Food**

12526 W. Sunset Ave.  
Airway Heights, WA  
315-8891

**d'wali Asian Bistro**

12924 W. Sunset Ave.  
Airway Heights, WA  
230-8629

**Domino's Pizza (Delivery)**

12622 Highway 2#B  
Airway Heights, WA  
244-2555

**Fusion Korean (Delivery)**

13112 W. Sunset Hwy  
Airway Heights, WA  
244-9921

**Jimmy Johns**

10829 US-2 Ste. 1  
Airway Heights, WA  
474-0796

**Lai Lai Gardens**

13008 W Sunset Hwy  
Airway Heights, WA  
244-0197

**LaPresa Mexican Restaurant**

13308 W Sunset HWY  
Airway Heights, WA  
244-7001

**Longhorn BBQ**

7611 W Sunset Hwy  
Airway Heights, WA  
838-8372

**Mongolian BBQ**

10414 US-2  
Airway Heights, WA  
747-2061

**Northern Quest Casino  
(Multiple eating establishments)**

<https://www.northernquest.com>  
100 N. Hayford Rd.  
Airway Heights, WA  
877-871-6772

**Panda Express**

11930 W. Sunset Hwy  
Airway Heights, WA  
244-7025

**Pizza Hut (Delivery)**

11820 W. Sunset Hwy  
Airway Heights, WA  
244-4300

**Rusty Moose**

9105 W US-2  
Spokane, WA  
747-5579

**Sala Thai Restaurant**

12914 W. Sunset Hwy  
Airway Heights, WA  
244-4800

**Shamus's Sandwich Shoppe**

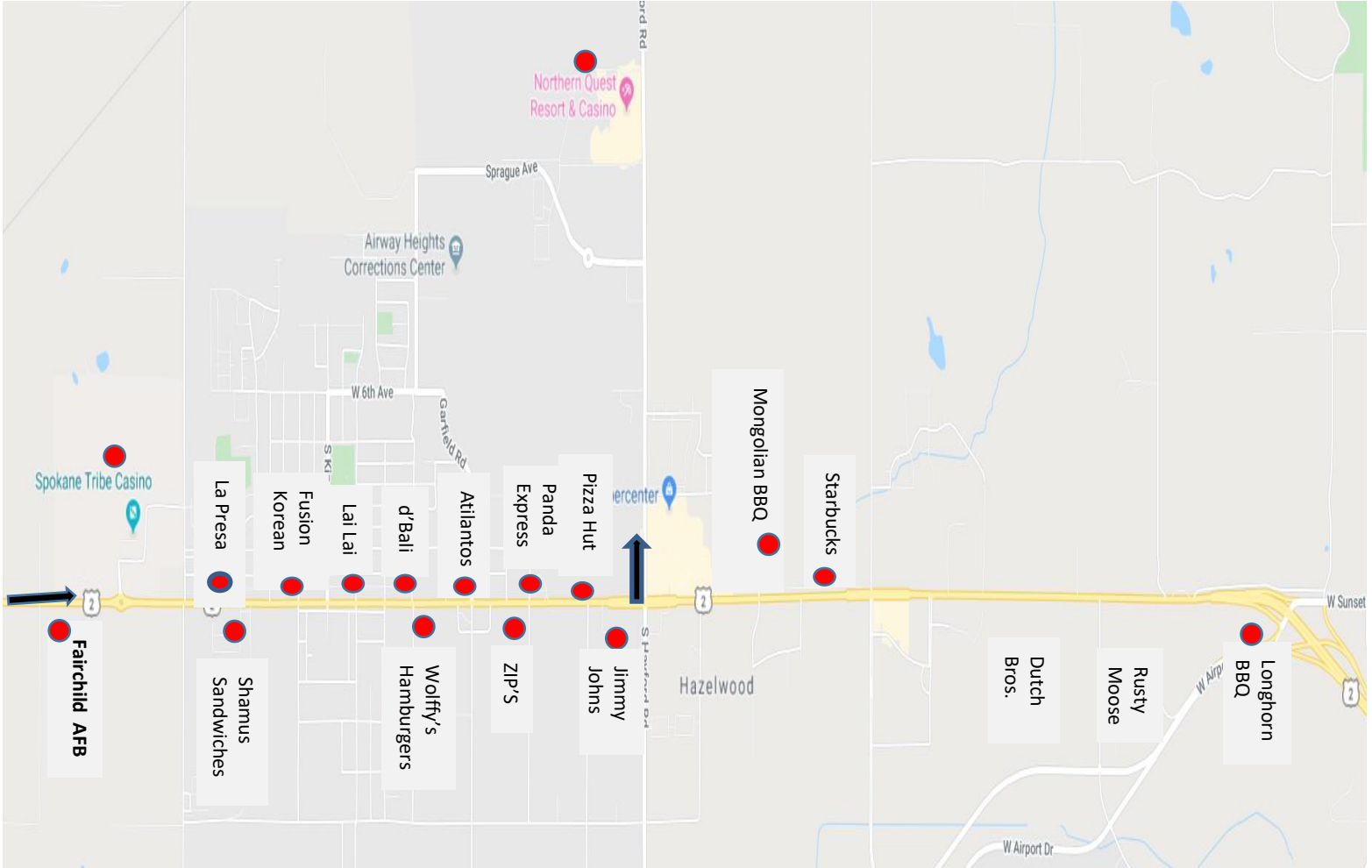
13311 W. Sunset Hwy.  
Airway Heights, WA  
863-9865

**ZIP's Drive-In**

12421 W. Sunset Hwy.  
Airway Heights, WA  
244-0600

# AIRWAY HEIGHTS LOCAL DINERS

Directions: Exit Main gate make a right turn and go straight into Airway Heights.



## **SPOKANE DINING**

### **AMERICAN**

**FRANKS DINER**-1516 W. 2<sup>nd</sup> Ave. Spokane, WA

**(509) 747-8798**

DIRECTIONS: From Exiting main gate make a Right turn towards Airway Heights Hwy2 go through Airway Heights. Take I-90-E towards Spokane. Follow I-90 E. to exit 280. Follow S. Walnut St. to your destination

### **ASIAN**

**SUSHI MARU**-808 W. Main Ave #105, Spokane, WA

**(509) 455-3900**

DIRECTIONS: From Exiting main gate make a Right turn towards Airway Heights Hwy2 go through Airway Heights. Take I-90-E towards Spokane. Take exit 281. Follow Division St and W. Spokane Falls Blvd to your destination.

**PF CHANGS**-801 W. Main Ave, Spokane, WA

**(509) 456-2166**

DIRECTIONS: From Exiting main gate make a Right turn towards Airway Heights Hwy2 go through Airway Heights. Take I-90-E towards Spokane. Take exit 280. Follow W. 4<sup>th</sup> Ave and S. Lincoln St. to Main Ave. Continue straight onto W. 4<sup>th</sup> Ave. Slight left toward S. Lincoln St. Then turn left onto S. Lincoln St. Turn Right onto W. Main Ave. Destination will be on your right.

### **BREWERY's & PUBS**

**BOSTON RESTAURANT**-14004 E. Indiana Ave. Spokane Valley, WA **(509) 927-4284**

DIRECTIONS: From Exiting main gate make a Right turn towards Airway Heights Hwy2 go through Airway Heights. Take I-90-E to N. Evergreen Rd. in Spokane Valley. Take exit 291A from I-90 Continue on N. Evergreen Rd to your destination.

**FLYING GOAT**-3318 W. Northwest Blvd. Spokane, WA

**(509) 327-8277**

DIRECTIONS: From Exiting main gate make a Right turn towards Airway Heights Hwy2 go through Airway Heights. Take I-90-E towards Spokane. Take exit 280 N. Maple to W. Northwest Blvd. Use the left 2 lanes to turn Left onto S. Walnut St. Then use the left 2 lanes to turn slightly left to stay on S. Walnut St (signs for Maple Street Bridge) Continue onto N. Maple St. Use the left 2 lanes to turn left onto W. Northwest Blvd. Destination will be on the right.

**NO-LI Brewhouse**-1003 Trent Ave #170.Spokane, WA

**(509) 242-2739**

DIRECTIONS: From Exiting main gate make a Right turn towards Airway Heights Hwy2 go through Airway Heights. Take I-90-E towards Spokane. Take exit 282 go straight onto N. Hamilton St. Turn right onto E. Springfield Ave. Turn Right. Destination on Left.

**STEALHEAD BAR & GRILL**-218 N. Howard St. Spokane, WA

**(509) 747-1303**

DIRECTIONS: From Exiting main gate make a Right turn towards Airway Heights Hwy2 go through Airway Heights. Take I-90-E towards Spokane. Use the right 2 lanes to take exit 280 from I-90 E. Continue on W 4<sup>th</sup> Ave. Take S Lincoln St to N. Howard St. Continue straight on W 4<sup>th</sup> Ave. Slight left toward Lincoln St. Turn Left onto S. Lincoln St. Turn right onto Main Ave. Turn left onto N. Howard St. Your destination will be on the right.

## **ITALIAN**

**LUIGI's**-245 W. Main Spokane, WA

**(509) 624-5226**

DIRECTIONS: From Exiting main gate make a Right turn towards Airway Heights Hwy2 go through Airway Heights. Take I-90-E towards Spokane. Use the right 2 lanes to take exit 281 toward US-2 E/US-395N/Newport/Colville. Merge onto US-2 E/US-395 N/S Division St. Continue on Riverside Ave. Drive to W. Main Ave. Turn left onto W. Riverside Ave. Turn right onto N. Bernard St. Turn right onto W. Main Ave. Destination will be on your right.

**OLD SPAGETTI FACTORY**-152 Monroe St. Spokane, WA

**(509) 624-8916**

DIRECTIONS: From Exiting main gate make a Right turn towards Airway Heights Hwy2 go through Airway Heights. Take I-90-E towards Spokane. Use the right 2 lanes to take exit 280 towards Lincoln St. Continue on S. Walnut St. Take W 1<sup>st</sup> Ave to S. Monroe St. Use the left 2 lanes to turn left onto Walnut St. Slight right towards 1<sup>st</sup> Ave. Turn right onto W 1<sup>st</sup> Ave. Turn Right onto S. Monroe St Destination will be on your right.

## **Seafood**

**ANTHONY'S**-510 North Lincoln Spokane, WA

**(509) 328-9009**

DIRECTIONS: From Exiting main gate make a Right turn towards Airway Heights Hwy2 go through Airway Heights. Take I-90-E towards Spokane. Use the right 2 lanes to take exit 280 from I-90 E. Continue on W 4<sup>th</sup> Ave. Take S Lincoln St to N. Howard St. Continue straight on W 4<sup>th</sup> Ave. Slight left toward Lincoln St. Turn Left onto S. Lincoln St. Use the Left 2 Lanes to turn left onto W. Main Ave. Use any lane to turn slightly rights onto N. Monroe St. Turn right onto W. Bridge Ave/W. Summit Pkwy. Turn right.

# BASE AND COMMUNITY SERVICES

FSS Command Section

(509) 247-5484

## **Airman & Family Readiness Center**

4 West Castle St

247-2246

## **Alterations**

244-6348

## **Aquatics Center (Indoor Pool)**

300 Castle St

247-2242

## **Aquatics Center (Outdoor Pool)**

200 East Castle St

247-2242/ 2631

## **Arts & Crafts Center**

610 N Depot Ave

247-3038 /4965

## **Auto Hobby Shop**

220 West Castle St

247-2310

## **Base Chapel**

300 Poplar Ave

247-2264

## **Base Housing Office**

244-9044/247-6500

## **Base Information**

247-1212

## **Base Operations**

247-5202

## **Base Theater**

247-5600

## **Barber Shop (Main)**

244-2848

## **Barber Shop (SERE)**

244-2848

## **Beauty Shop**

244-5380

## **AAFES/BX**

244-2832

## **Child Development Center**

201 E Fairchild Hwy

247-2403/ 2408

## **Civilian Personnel**

7 West Arnold St

247-4313

## **Clear Lake Recreation Area**

14824 Clear Lake Rd

299-5129/247-5920

## **Command Post**

247-4051

## **Commissary**

105A W Spaatz Rd.

244-5591

## **Education & Training**

6 West Castle St.

247-2348

## **Engraving**

610 N Depot Ave

247-2434

## **FamCamp**

326 El Paso

244-247/5920

## **Family Child Care**

610 N Depot Ave

247-5336

## **Family Health Clinic**

247-2361

## **Family Services**

247-5154

## **Family Support**

247-2246

## **Finance Customers**

247-3748

## **Fitness Center**

300 Castle St

247-2791/2792

## **Flight Kitchen**

247-2614

Fax: 247-2064

Flight-ground meals &

Grab-n-go 24/7

## **Frame Shop**

610 N Depot Ave.

247-3038

## **FSS (Club) Card Staff**

10 West Ent St

247-1800

## **Honor Guard**

Gate 23 Rd

Triple F

247-4713

after hours

208-7103

## **ITT**

101 W Spaatz Rd

247-5649

## **Library**

2 W Castle St

247-5556 /5228

## **Main Gate**

247-5495

**Military Personnel  
Section (ID Cards)**  
7 West Arnold St.  
247-4023

**Military Clothing  
Dry Cleaning**  
244-3324

**NAF Human  
Resources**  
7 West Arnold St  
247-3233/8007

**Outdoor Recreation  
Connection  
Pass & ID**  
247-5071

**Postal Service (PCS)**  
247-5875

**Preteen Center**  
5 West Bong St  
247-8043

**Readiness**  
247-9617/4566

**Red Morgan Center**  
10 West Ent St  
247-1800

**Security police (LE)**  
247-5493

**Shoppette**  
300 North SAC Blvd  
244-5095

**Survival Fitness  
Center**  
901 West Artillery Rd  
247-2991

**Tanker Tails Kennel**  
9 Sports Range Rd  
247-4699

**Teen Center**  
5 West Bong St  
247-8043

**TMO (Inbound)**  
247-5626

**TMO (Outbound)**  
247-5815

**Wood Craft Center**  
610 N Depot Ave  
247-5189

**Youth Center**  
247-5601

**Youth Sports Office**  
10 West Ent St  
247-5619

**Veterinarian  
Services**  
402 North Vet Rd  
247-2583

**Banks**  
Global Credit Union  
244-9216

**ATM Locations**  
Shoppette  
BX  
Commissary  
Survival Lobby Bldg. 1252



## LOCAL POINTS OF INTEREST

### **Cat Tales Zoological Park**

17020 N. Newport Hwy  
Mead, WA  
238-4126

### **Flying Squirrel**

15312 E. Sprague Ave.  
Spokane Valley, WA  
242-3831

### **GET AIR (Trampoline Fun)**

4750 N. Division St.  
Spokane, WA  
363-5422

### **John A. Finch Arboretum**

3404 W. Woodland Blvd.  
Spokane, WA  
363-5455

### **Manito Park and Gardens**

1702 S. Grand Blvd\  
Spokane, WA  
324-7000

### **Mobius Children's Museum**

808 W/ Main Ave  
Spokane, WA  
(509) 321-7121

### **NorthTown Mall**

4750 N. Division St  
Spokane, WA  
(509) 482-0209

### **Riverfront Park Mall**

507 N. Howard  
Spokane, WA  
(509) 625-6600

### **Sky High Sports Trampoline Fun**

1322 E. Front Ave  
Spokane WA  
(509)-321-5867

### **Northern Quest Casino**

(Food, Kids Quest, Movie Theater  
122 N. Hayford Rd.  
Airway Heights, WA  
877-871-6772

### **Silverwood Theme Park**

27243 N. Hwy. 95  
Athol, ID  
(208) 683-3400

### **Spokane Arena**

720 W. Mallon  
Spokane, WA  
(509) 324-7000

### **Spokane Valley Mall)**

14700 E. Indiana Ave  
Spokane Valley, WA  
926-3700

### **BEAUTIFUL TRAILS TO WALK/DRIVE (KID FRIENDLY)**

#### **Bowl & Pitcher Trails**

4427 N. Aubry L. White Pkwy  
Spokane, WA

#### **Centennial Trail Park**

S A St & W. Clark Ave.  
Spokane, WA

#### **Cliff Drive-Overlooking Spokane**

W. Cliff Dr.  
Spokane, WA

#### **Rim Rock View-Overlooking Spokane**

2-198 S. Rimrock Dr.  
Spokane, WA

## WEBSITES

**[WWW.INLANDER.COM](http://WWW.INLANDER.COM)**

**[WWW.VISITSPOKANE.COM](http://WWW.VISITSPOKANE.COM)**

**[WWW.WTA.COM](http://WWW.WTA.COM)**

# VETERINARY CLINICS & KENNEL SERVICES

## VET CLINICS

### **Fairchild Veterinarian Services Building**

402 North Vet Rd. Building 2424

FAFB, WA

**(509) 247-2583/2584**

DIRECTIONS: From front gate turn right onto Fairchild St. Then Turn right onto Vet Rd.

### **Kings Veterinary Clinic**

1521 S Mullan RD

Airway Heights, WA

**(509) 244-5549**

DIRECTIONS: When exiting front gate turn right towards Airway Heights. Go through traffic circle and make a right onto Mullan Rd. Clinic will be on your left after the Post Office.

### **Medical Lake Veterinary Clinic**

7616 S. Bartholomew Rd.

Medical Lake, WA

**(509) 299-3675**

DIRECTIONS: When exiting front gate turn right towards Airway Heights. Go through traffic circle and make a right onto Craig Rd. Turn right onto Thorpe and then quick left onto S. Craig Rd. At the traffic circle take the 1<sup>st</sup> exit onto WA-902-W. Turn right onto S. Bartholomew Rd.

### **West Plains Veterinary Clinic**

2611 W Sunset Hwy, # B

Airway Heights, WA

**(509) 747-2577**

DIRECTIONS: When exiting front gate turn right towards Airway Heights. Go through traffic circle and keep going straight. Make a Left on Hayford Rd. Make a quick right into Wal-mart parking lot. Past Taco Bell you will see the Vet clinic next to the Noodle House.

## **KENNELS**

### **Fairchild Tanker Tails Kennels**

9 Sports Range Rd. Building 109

FAFB, WA

**(509)247-4699**

DIRECTIONS: From front gate continue straight onto Mitchell St. Turn left onto Eaker Ave. Make a left onto Sport Range Rd and then make a sharp left.

### **West Wind Kennels**

5620 S Craig Rd

**(509) 244-2259**

DIRECTIONS: Turn right onto US-2. Then make a right turn on Craig Rd. At stop sign turn right on W. Thorpe. Then a quick left on S. Craig Rd. Your destination will be on your right about ½ mile down the road.

### **Whispering Oak Kennels**

12815 W. Medical Lake hwy.

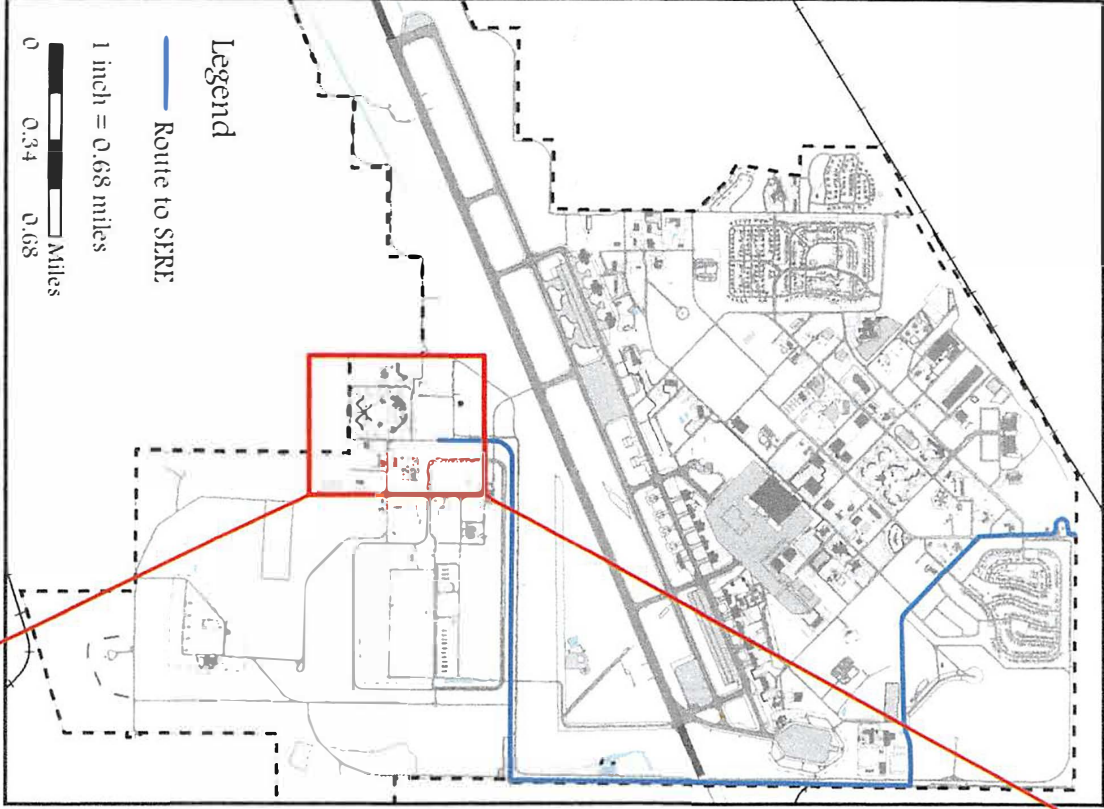
Medical Lake, WA

**(509) 991-3075**

DIRECTIONS: Turn right on US-2. Turn right on S Craig Rd. Turn right on W. Thorpe. Turn left on S. Craig Rd. Turn left on W. medical lake Rd.

## **TRANSPORTATION NUMBERS**

<b>Bill's Friendly Taxi</b>	<b>509-951-5445</b>
<b>Bull Dog Taxi</b>	<b>509-724-3025</b>
<b>Spokane Cab</b>	<b>509-568-8000</b>
<b>Red and Black Taxi</b>	<b>509-768-7573</b>
<b>Val in Time Taxi</b>	<b>509-217-7793</b>
<b>Vinny Cab</b>	<b>509-619-8757</b>
<b>5 Star Taxi</b>	<b>509-863-6910</b>
<b>Spokane Bus Transit</b>	<b>509-328-7433</b>
<b>24/7 Cab</b>	<b>509-768-9407</b>
<b>Vehicle Operations (Main)</b>	<b>509-247-2244</b>
<b>Vehicle Operations (Survival)</b>	<b>509-247-5511</b>



**Legend**

— Route to SERE

1 inch = 0.68 miles

0 0.34 0.68 Miles

# FSS LODGING

24th Air Force  
247-3399

24th Air Force Geobase  
247-3399

Magnetic Declination:  
14° 40' E ± 0.2°  
changing by 0.8" W per year

24 August 2017

Projection: UTM, Zone 11N  
Datum & Spheroid: NAD83/NAVT88  
This Material is for Official Use Only.



**Legend**

— Route to SERE

Facilities of Interest

1 inch = 0.08 miles

0 0.04 0.08 0.16 Miles

# FSS LODGING

- Legend**
- Route to Duplexes
  - Lodging Facilities

1 inch = 1,250 feet

0 625 1,250 feet

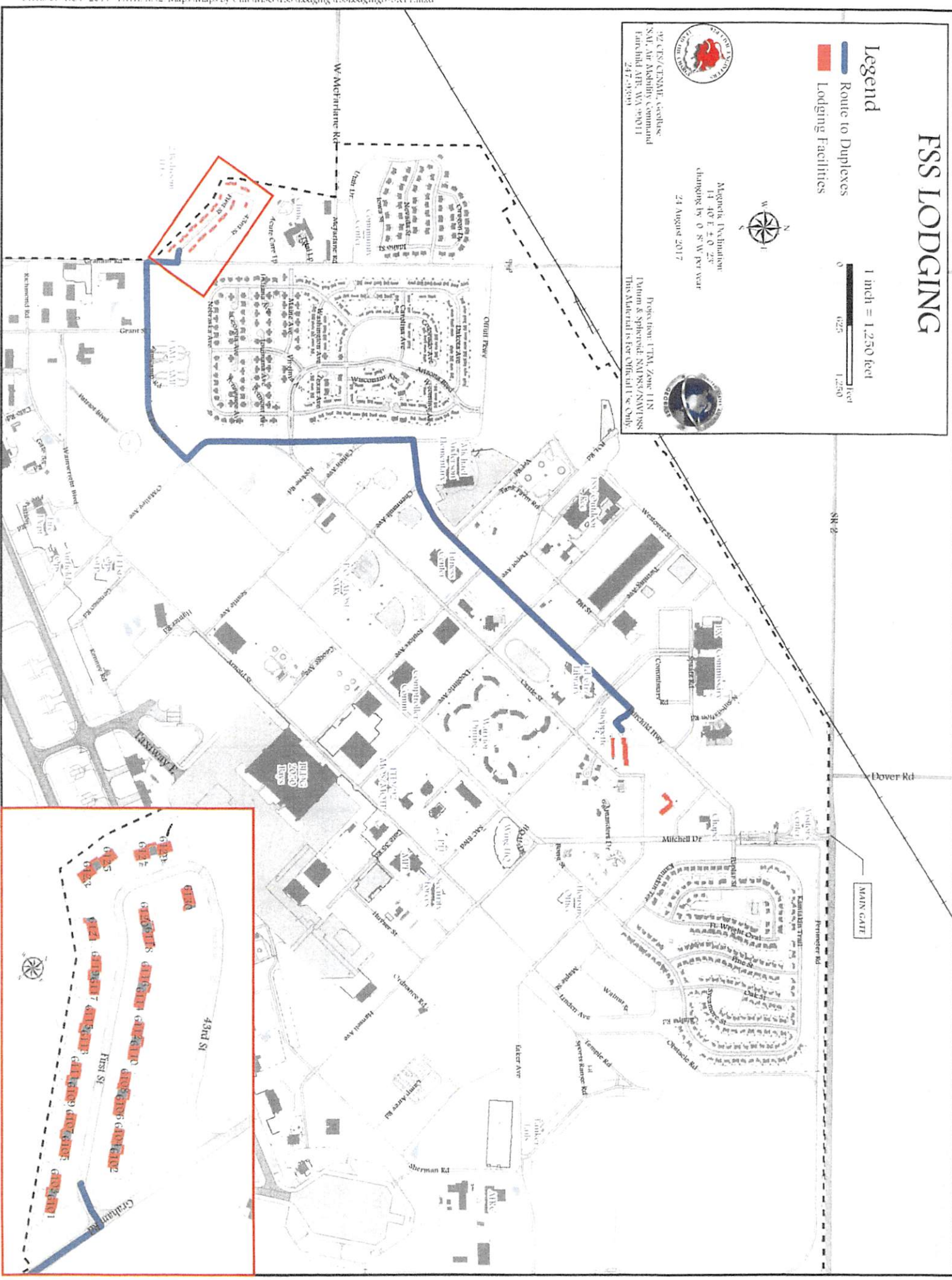


92 CTS/CENAF, ceolbas  
 SMI Air Ashby Command  
 Fitchfield AFB, VA 22011  
 247-3930

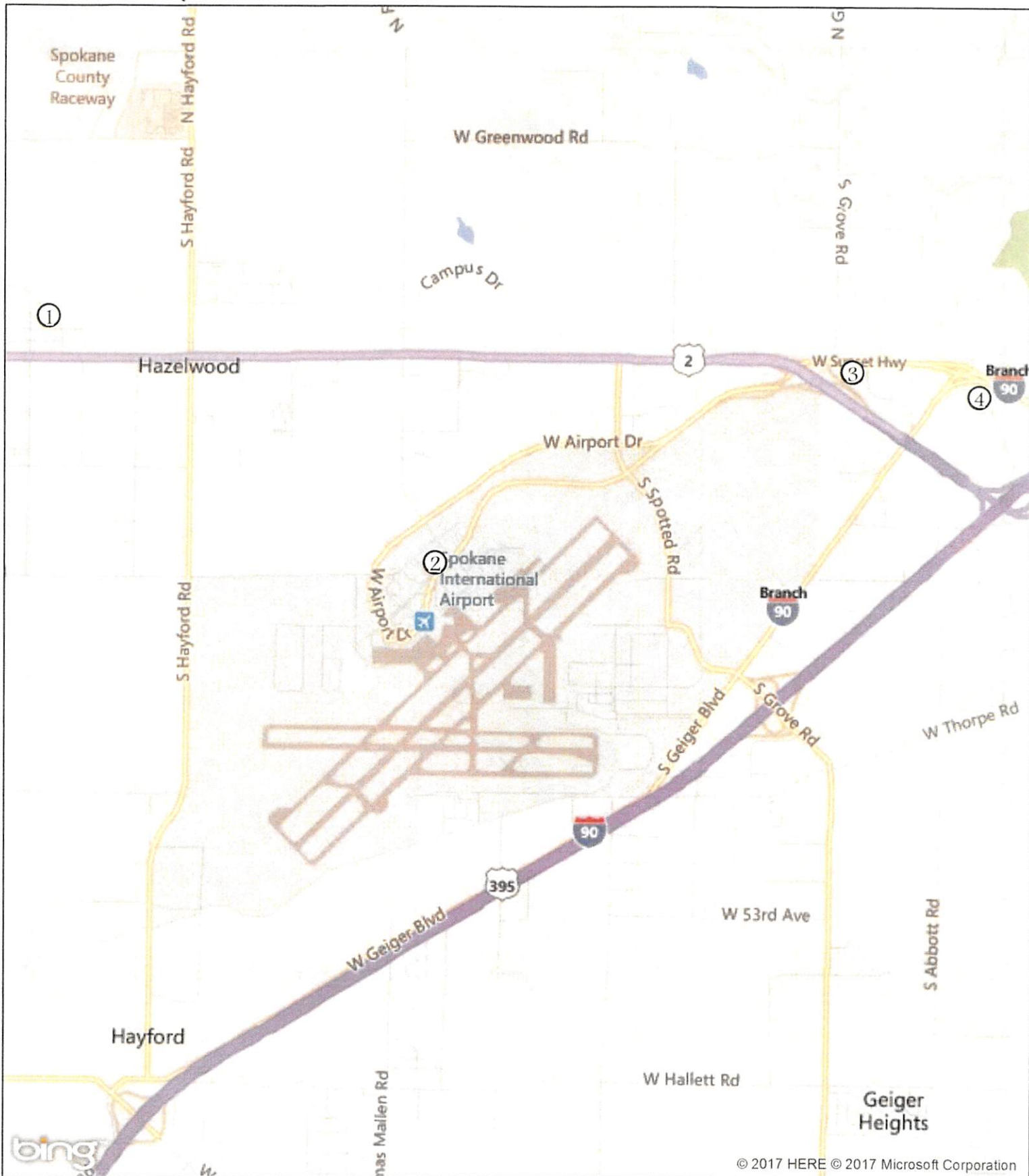
Margaret Pugh  
 14 40 E 40 28  
 changing by 0 8 W per year  
 24 August 2017



Printed from: 17M\_Zone\_11N  
 Datum: NAD83  
 This Material is For Official Use Only





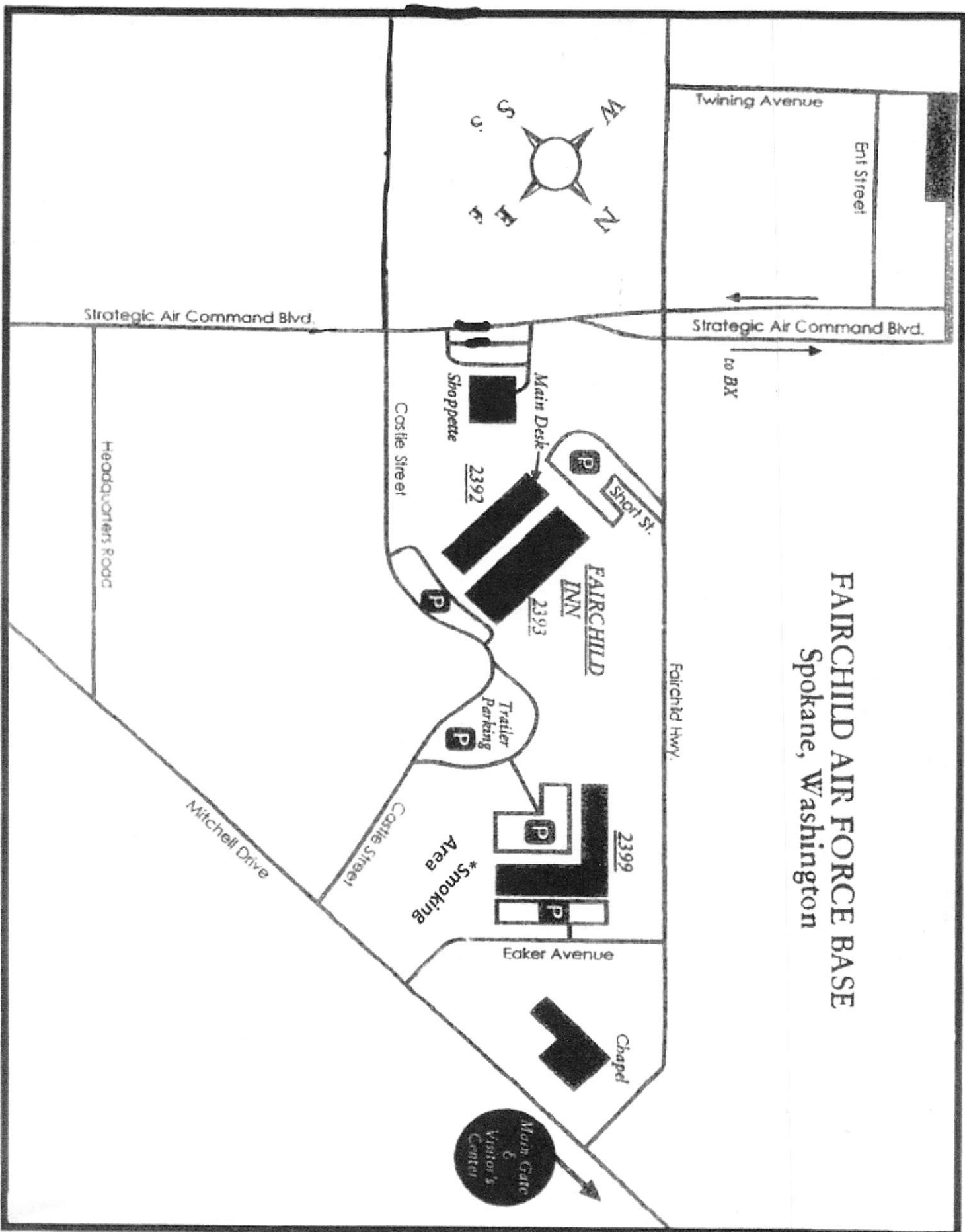


Contract Quarters, Address, and Phone number

1. Stratford Suites 11808 W. Center Ln., Airway Heights, WA 99001 509-321-1600
2. Windgate By Wyndham 2726 S Flint Rd., Spokane International Airport, Spokane, WA 99224 509-838-3226
3. Hampton Inn 2010 S. Assembly Rd., Spokane, WA 99224 509-747-1100
4. Holiday Inn Spokane Airport 1616 S. Windsor Dr., Spokane, WA 99224 509-838-1170



# FAIRCHILD AIR FORCE BASE Spokane, Washington

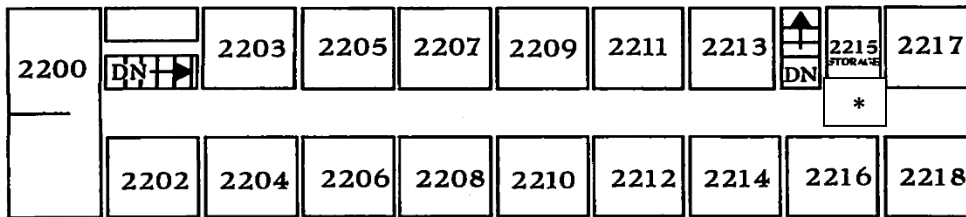




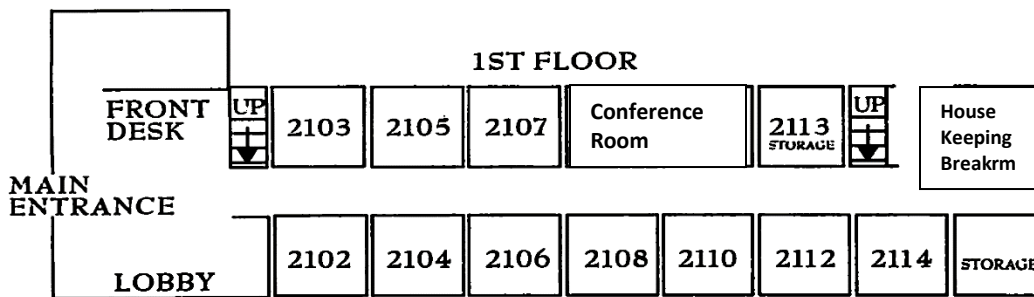


## BUILDING 2392 FLOOR PLAN

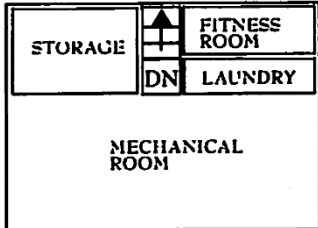
### 2ND FLOOR



### 1ST FLOOR



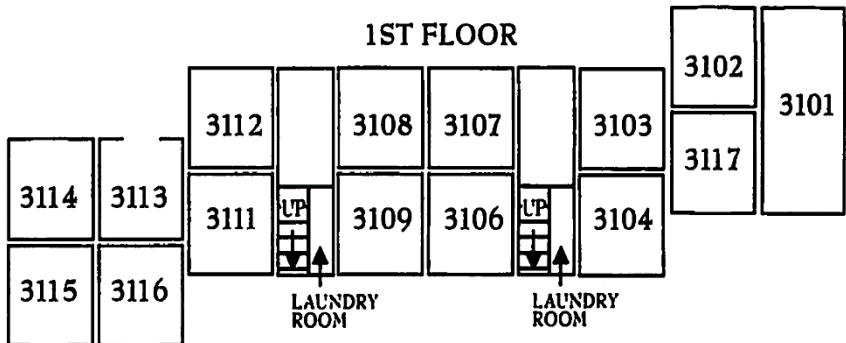
### BASEMENT



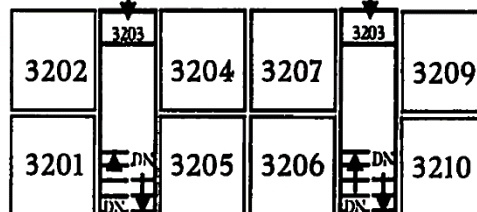
- 2102 Front Desk Mgr.
- 2103 Accounting
- 2104 Quality Assurance
- 2105 Manager
- 2106 Operations
- 2107 Supply
- 2108 Guest Office
- 2110 Housekeeping
- 2112 Maintenance
- \* ICE Machine

## BUILDING 2393 FLOOR PLAN

### 1ST FLOOR

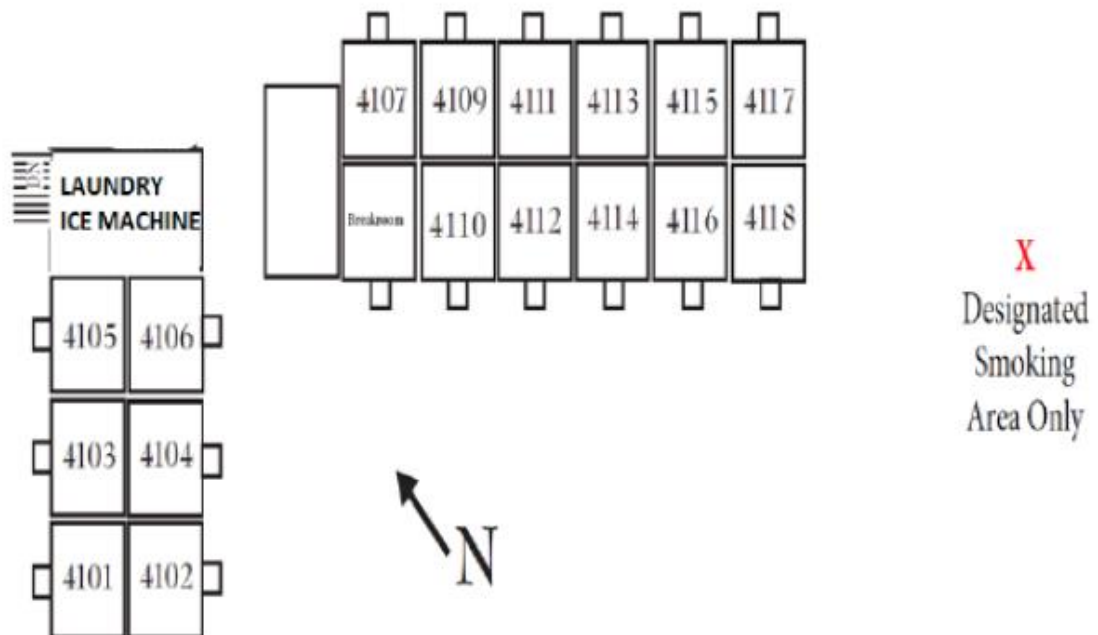


### 2ND FLOOR



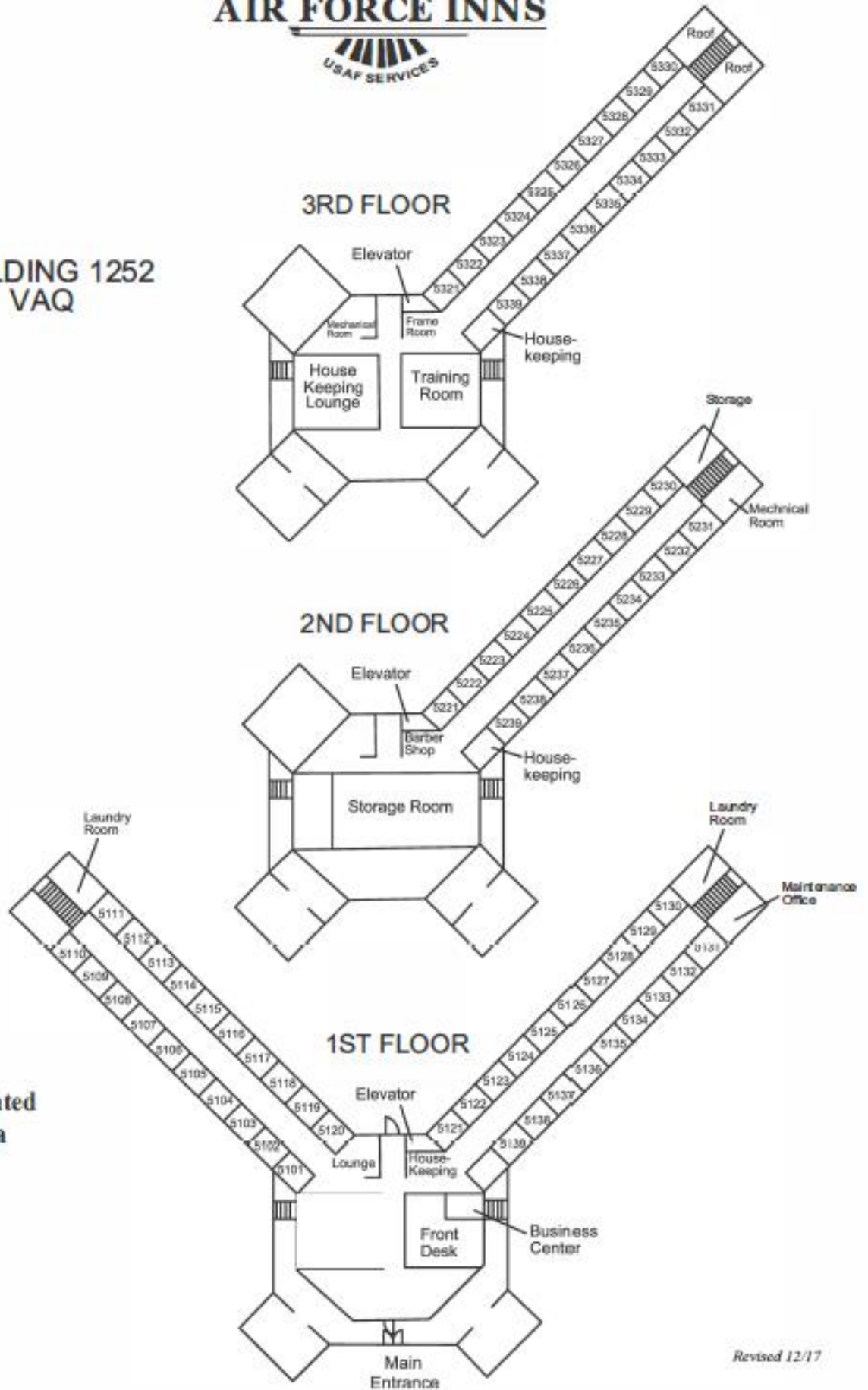


## FAMILY QUARTERS (TLF) BUILDING 2399





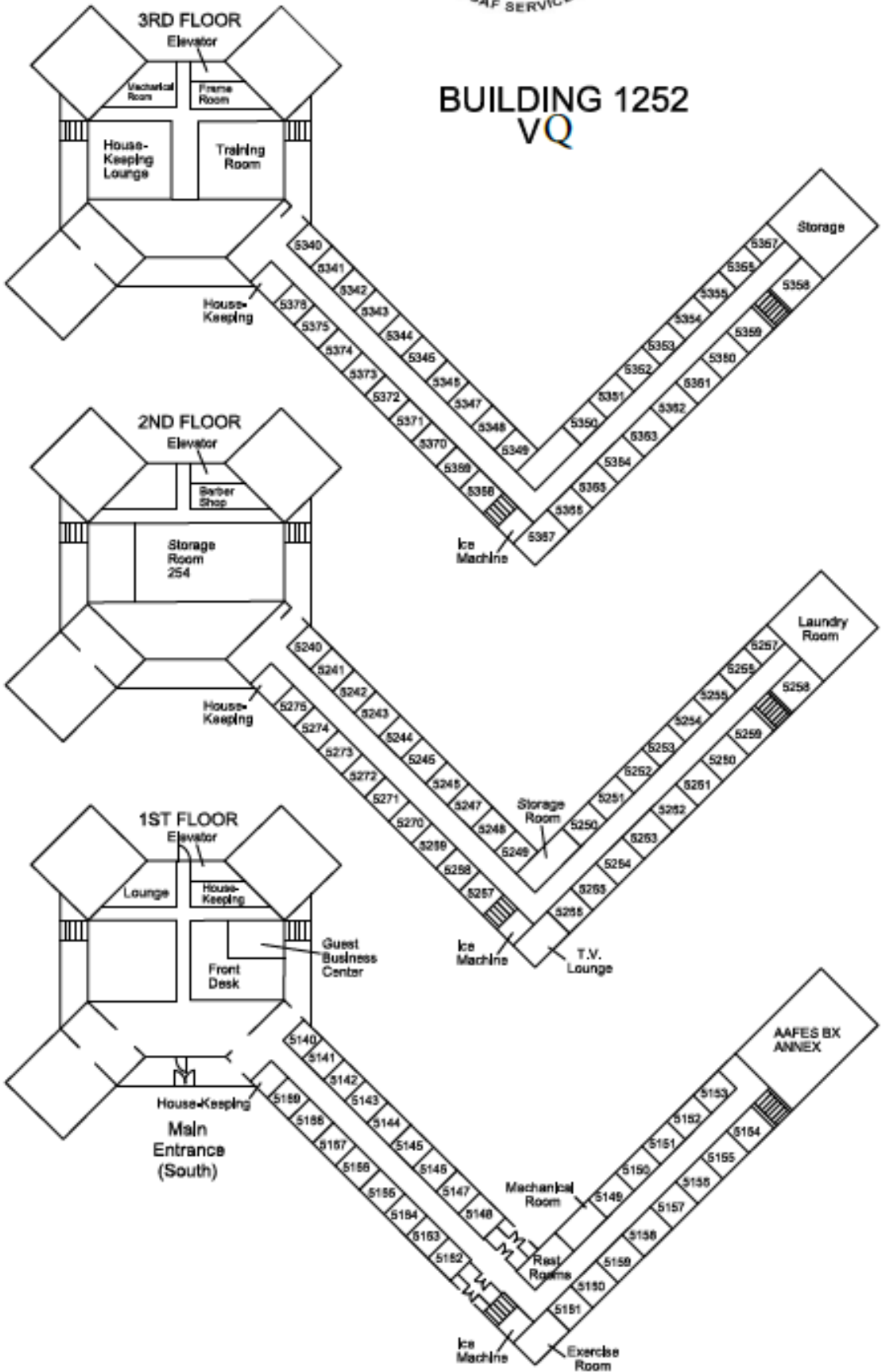
BUILDING 1252  
VAQ



Pavilion-Designated  
Smoking Area  
**X**



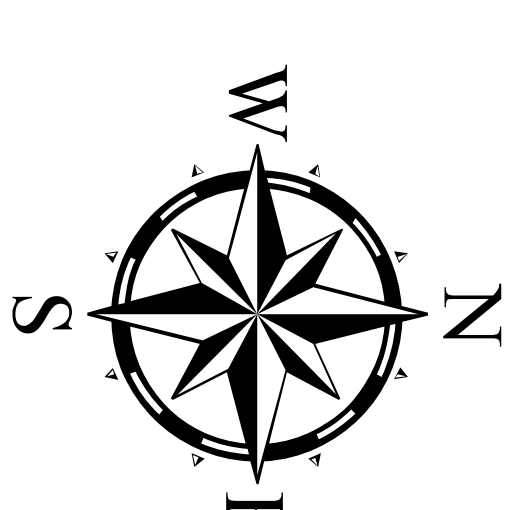
**BUILDING 1252**  
**VQ**





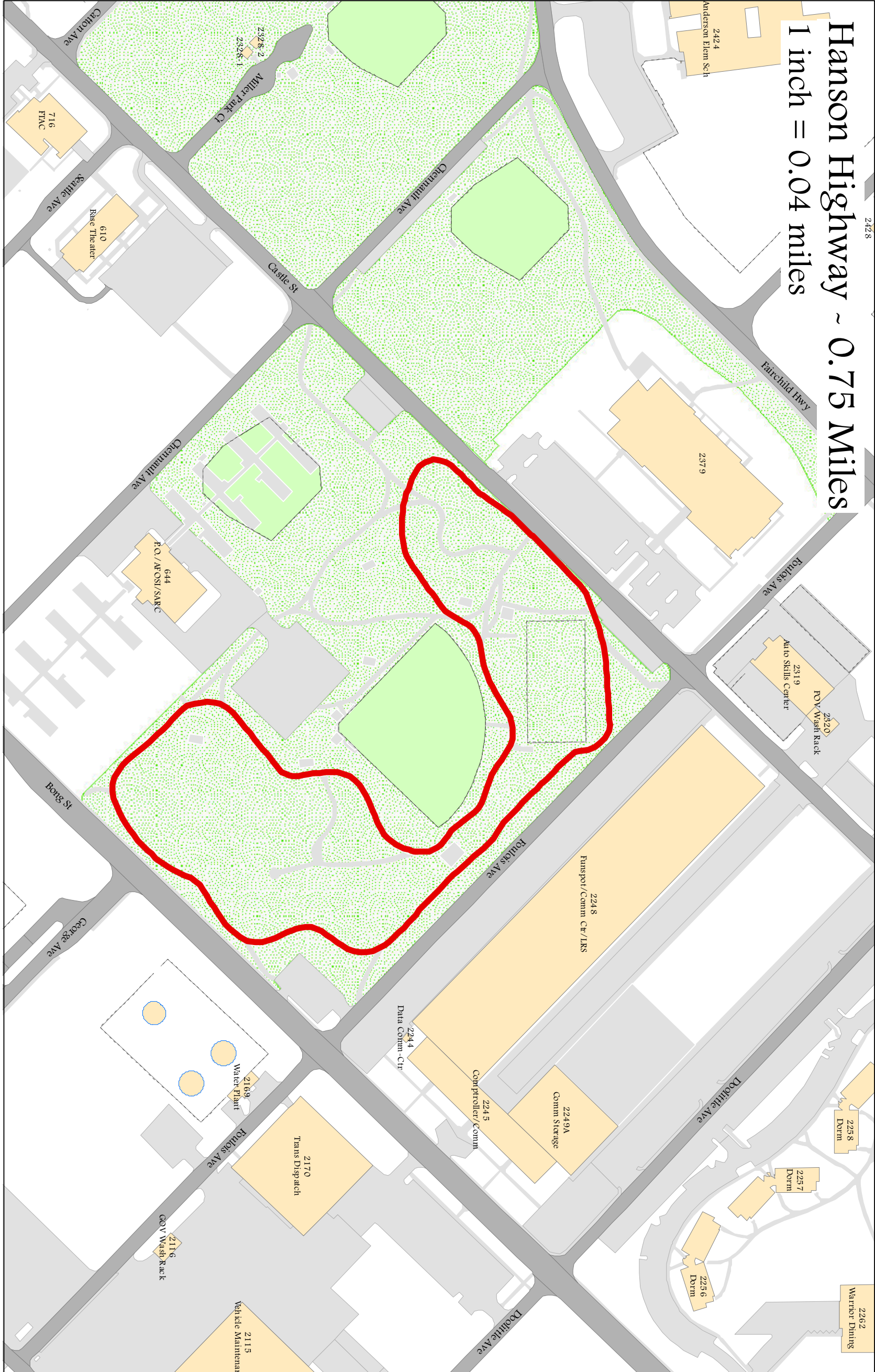
# Running Routes

Fairchild AFB

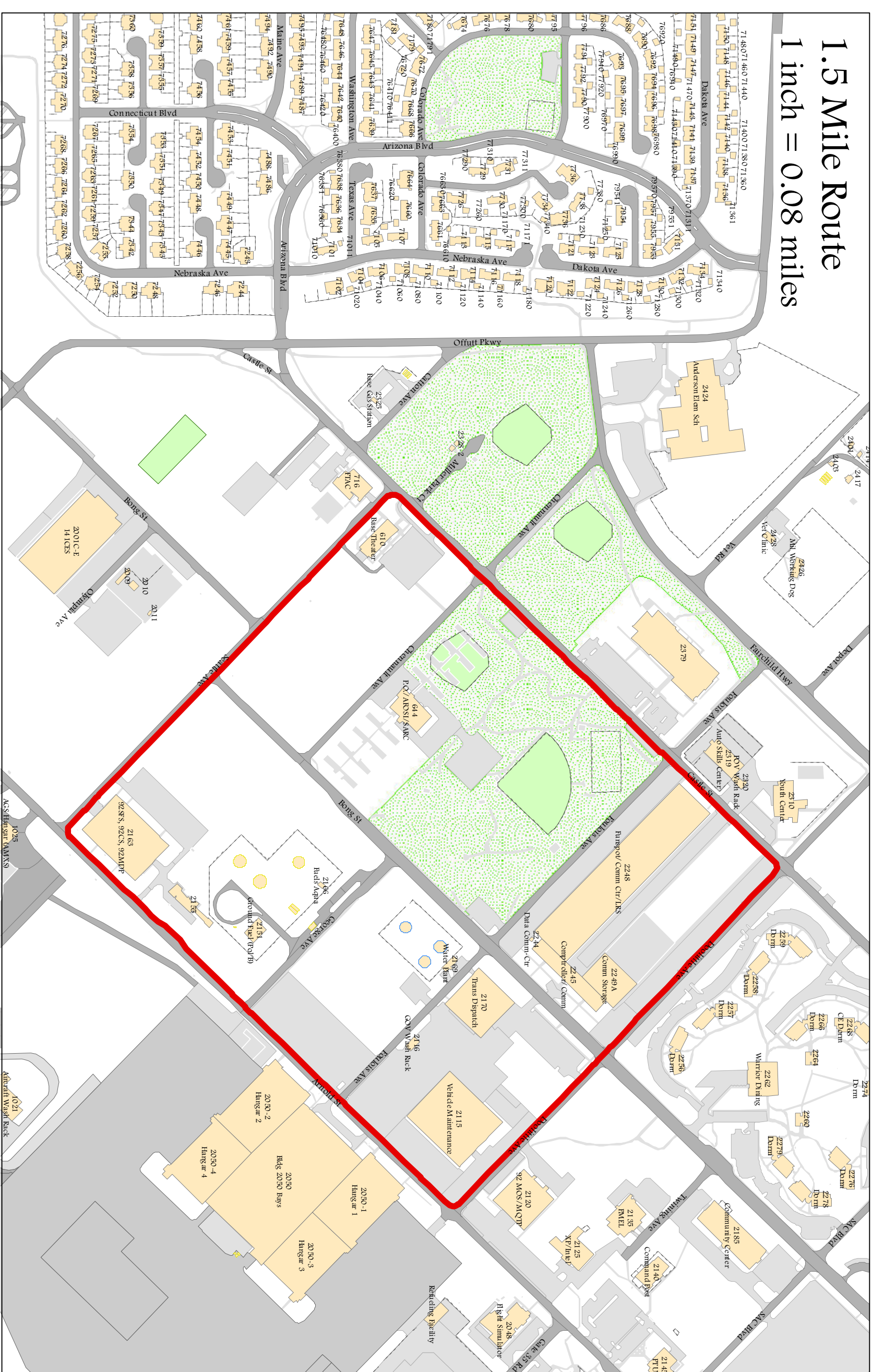


Projection: UTM, Zone 11N  
Datum & Spheroid: WGS84  
For Official Use Only  
PATH: X: Maps Maps by Unit/MSG/  
FSS Running Routes

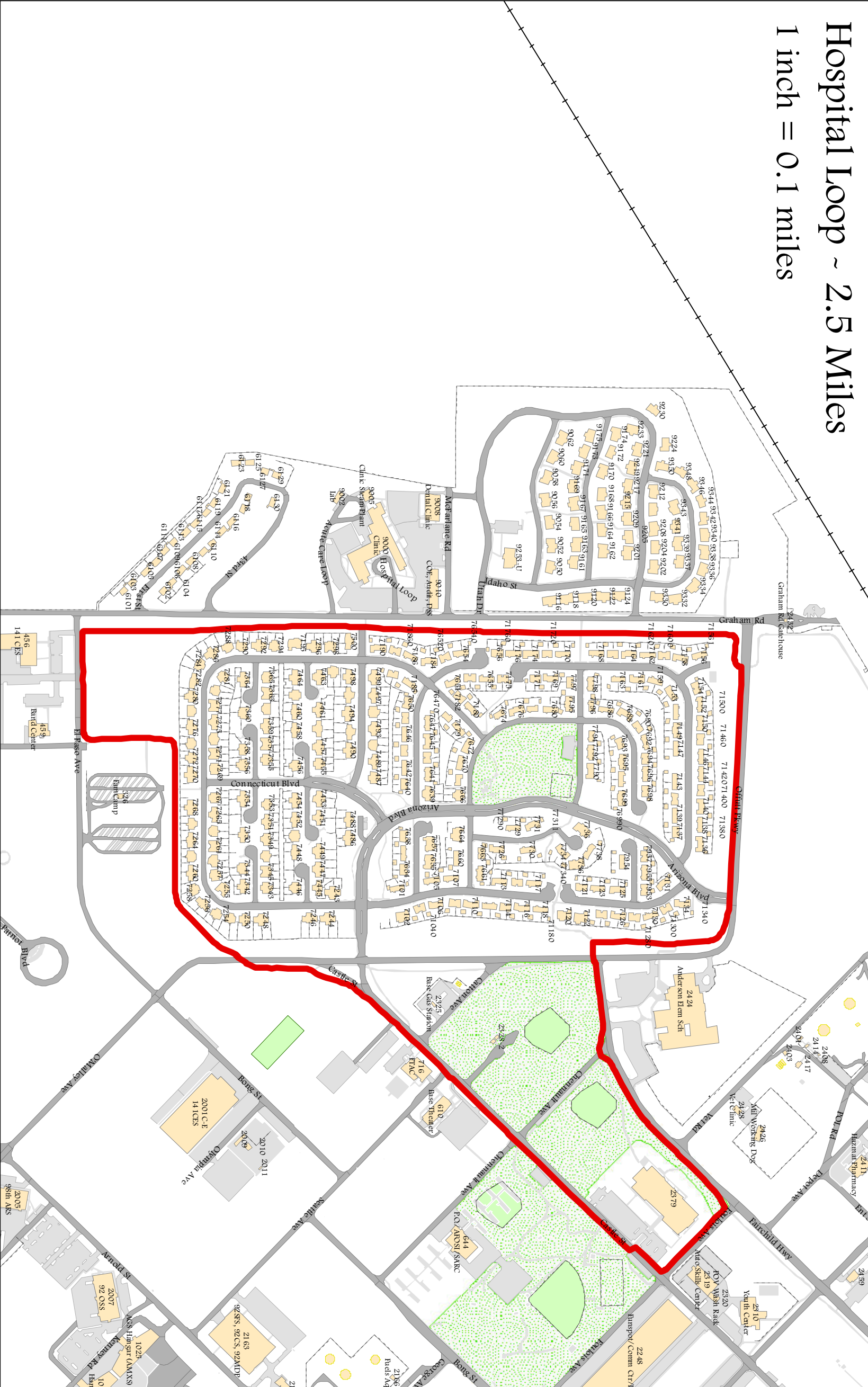
Hanson Highway - 0.75 Miles  
1 inch = 0.04 miles



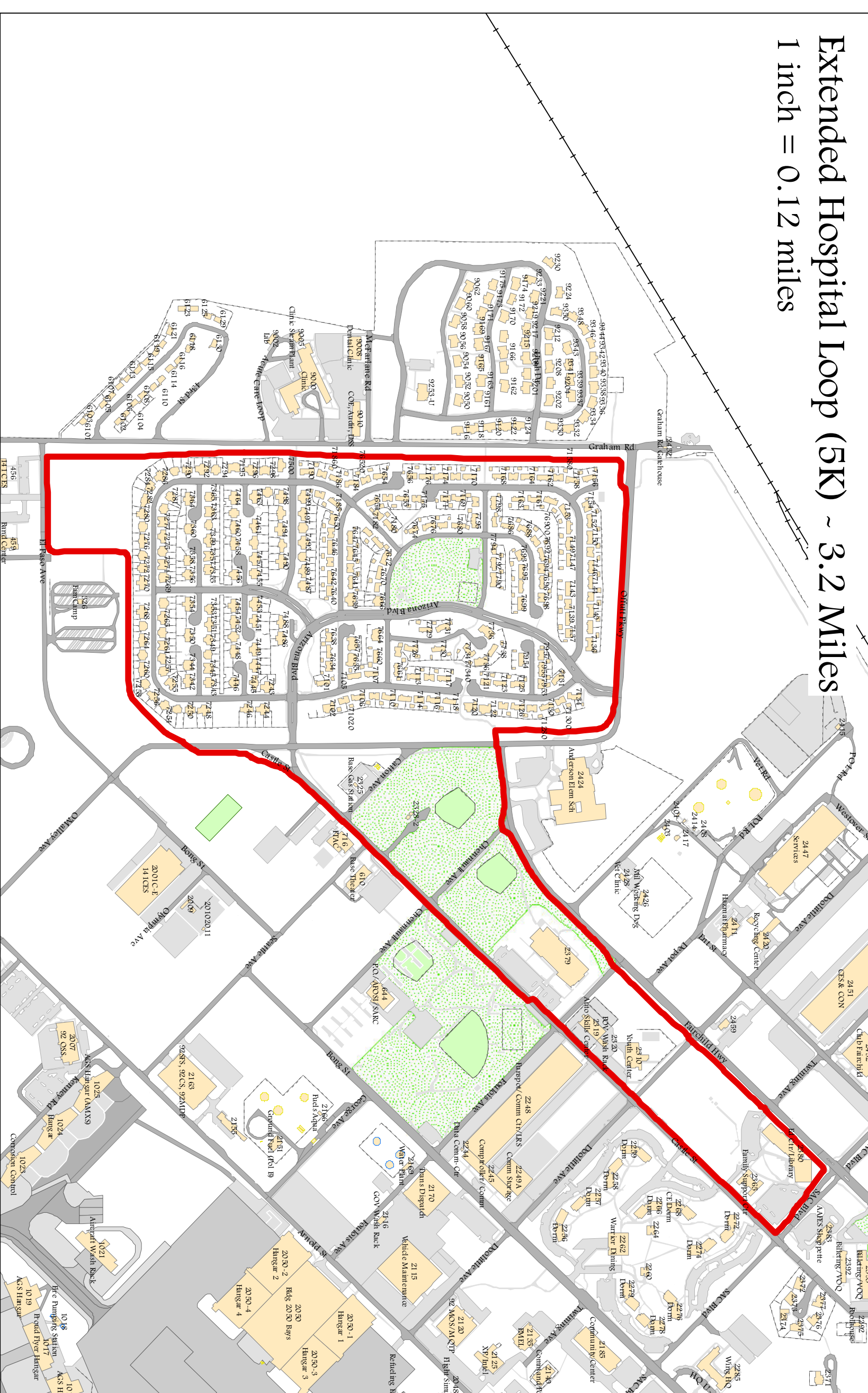
1.5 Mile Route  
1 inch = 0.08 miles



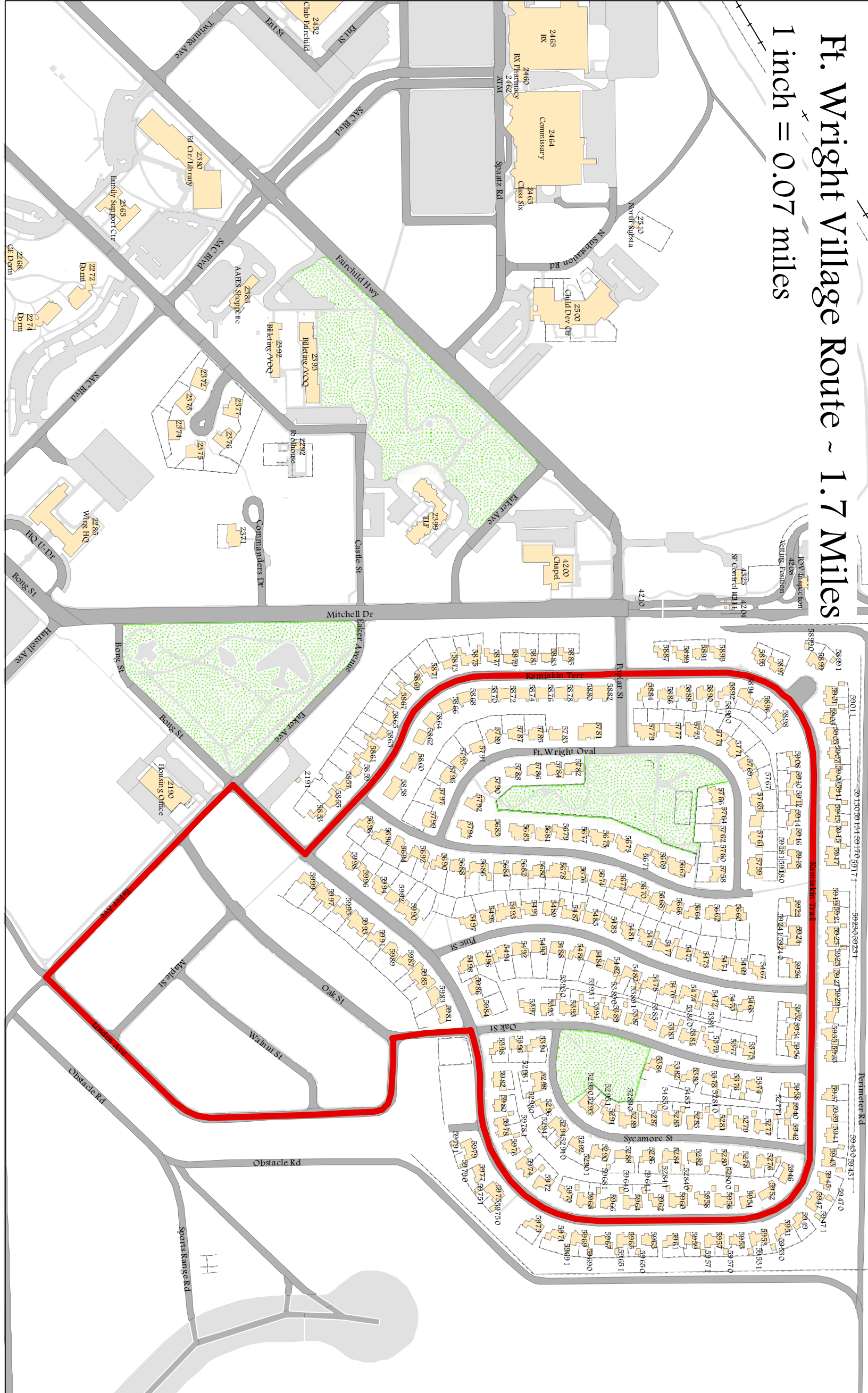
Hospital Loop - 2.5 Miles  
1 inch = 0.1 miles



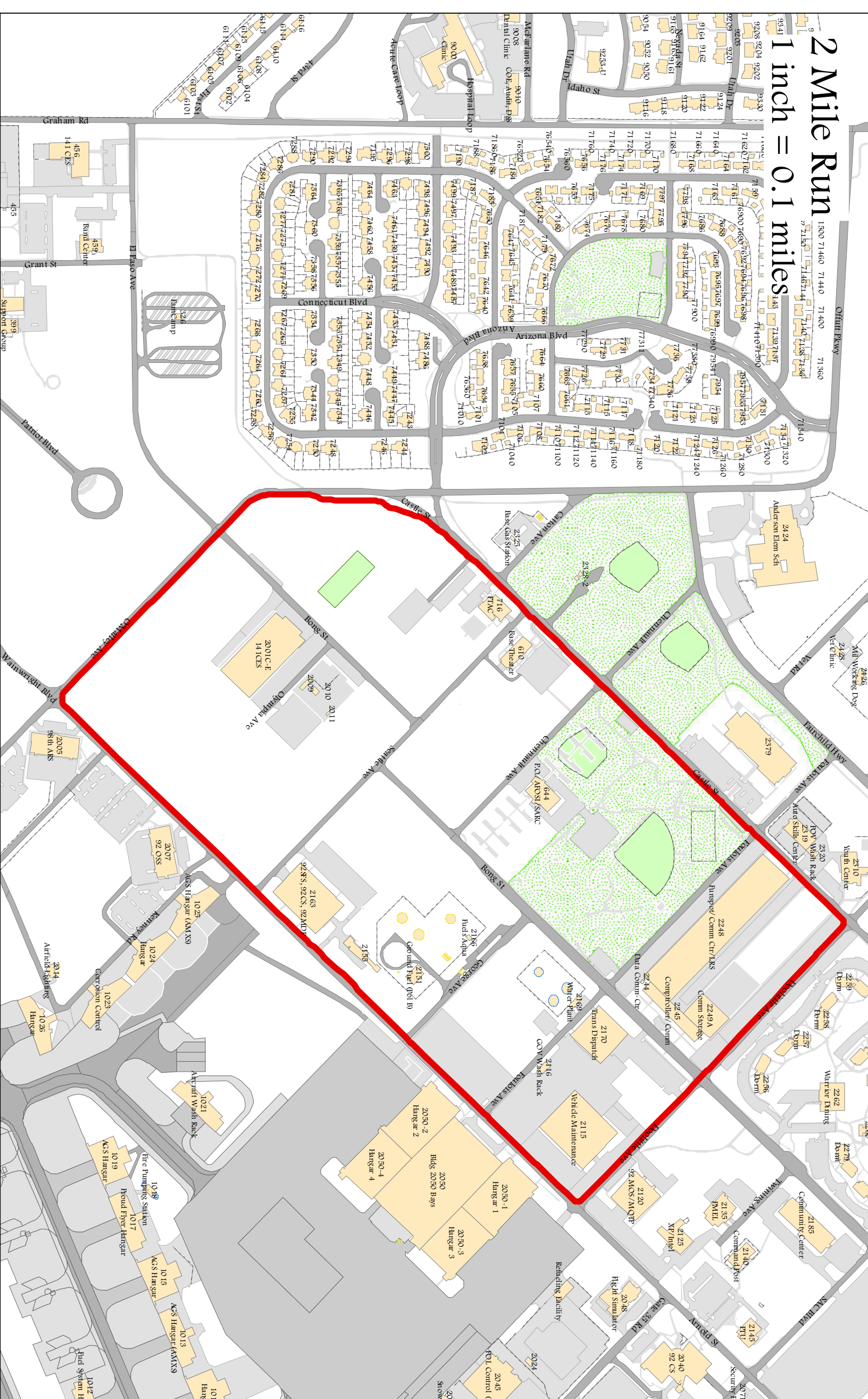
Extended Hospital Loop (EK) - 3.2 Miles  
1 inch = 0.12 miles



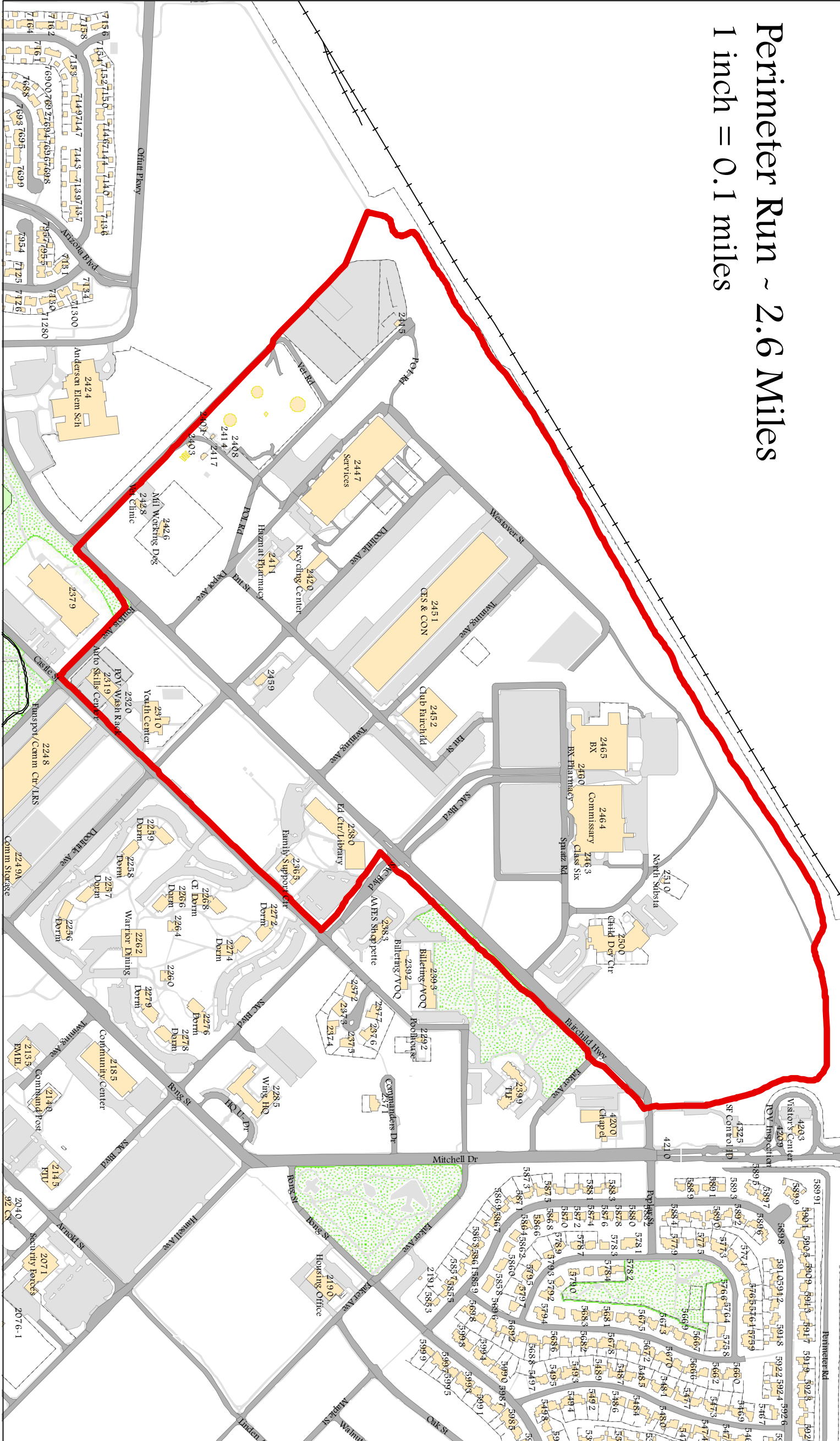
F. Wright Village Route - 1.7 Miles  
1 inch = 0.07 miles



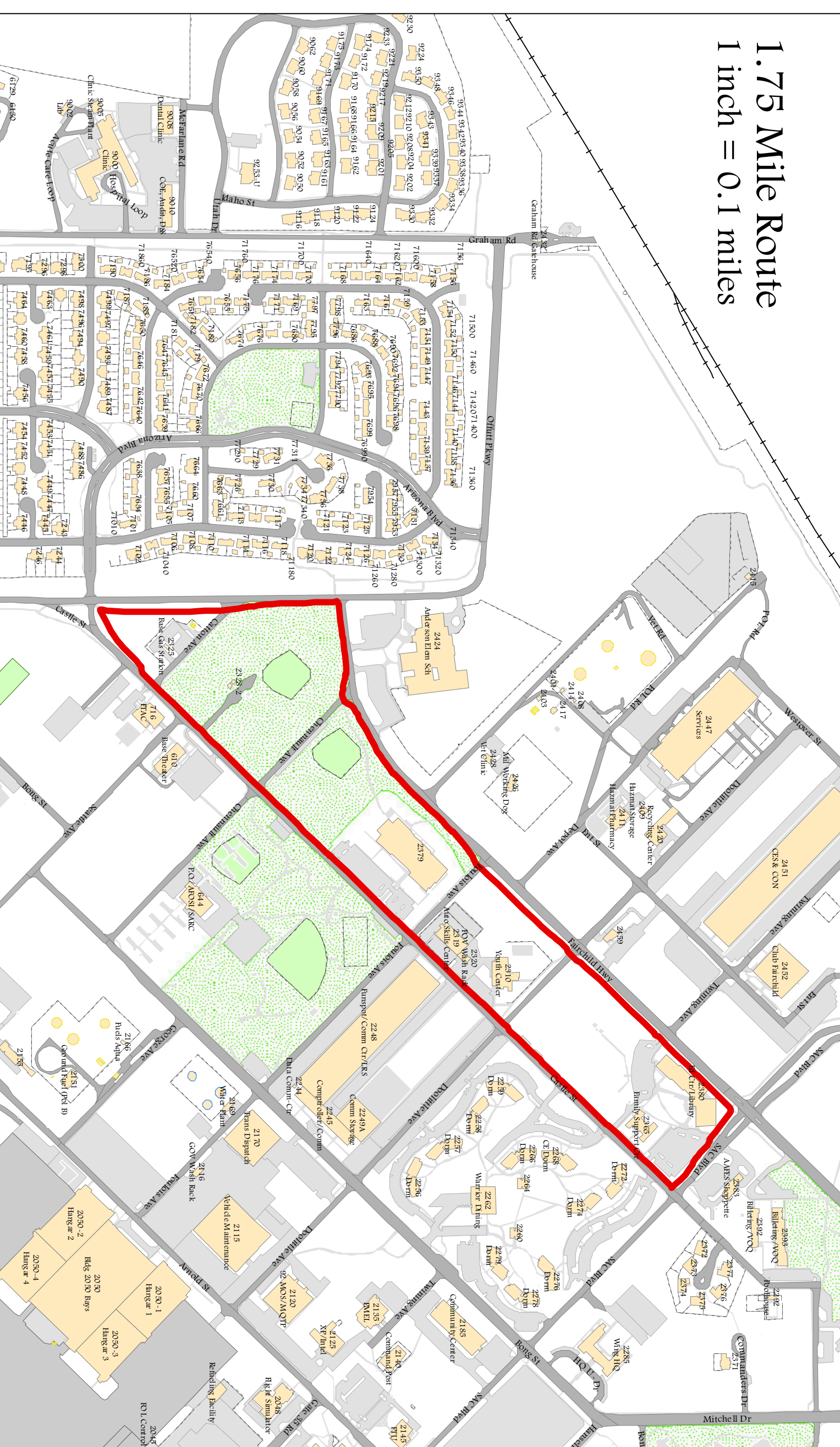
2 Mile Run  
1 inch = 0.1 miles



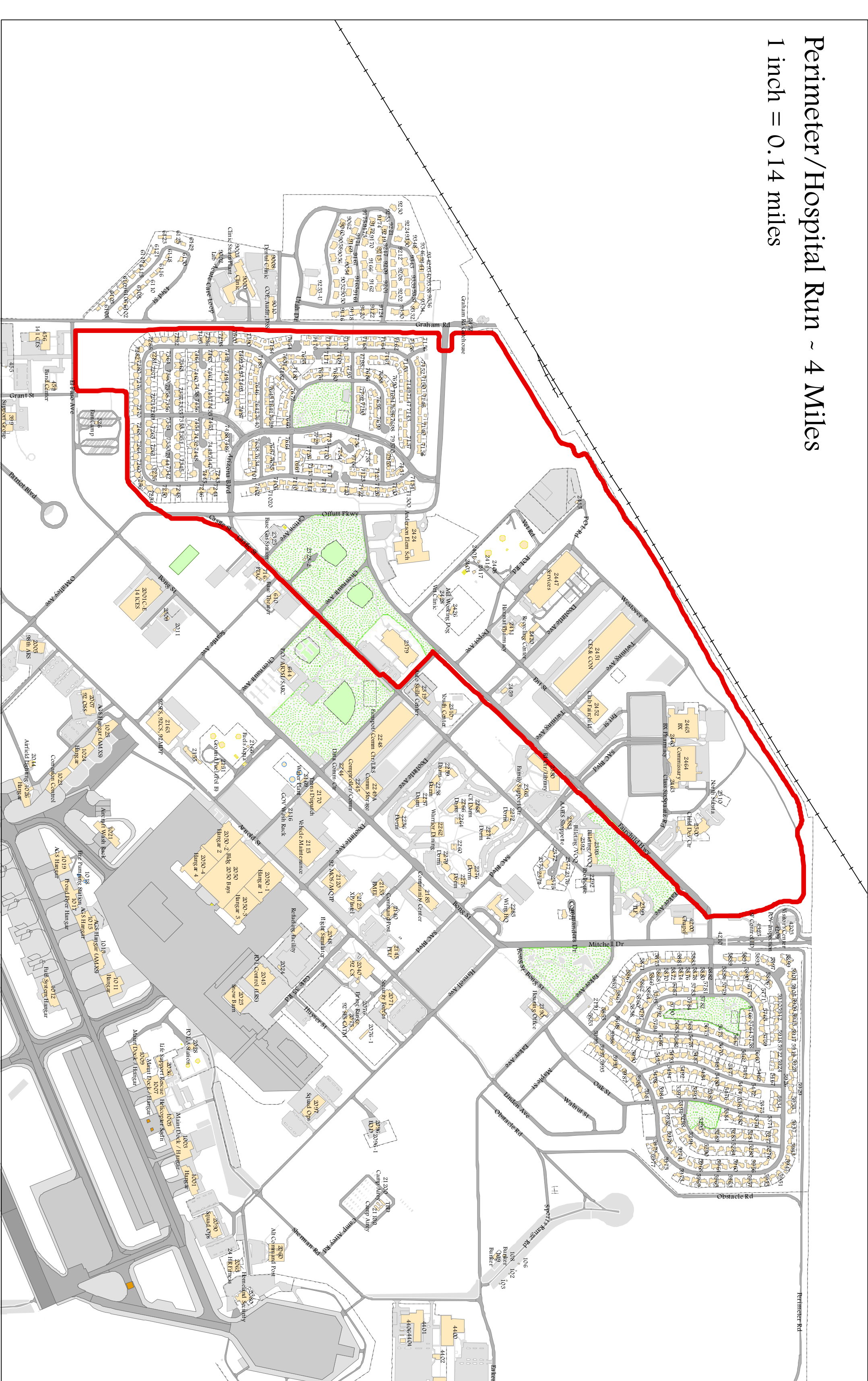
Perimeter Run - 2.6 Miles  
1 inch = 0.1 miles



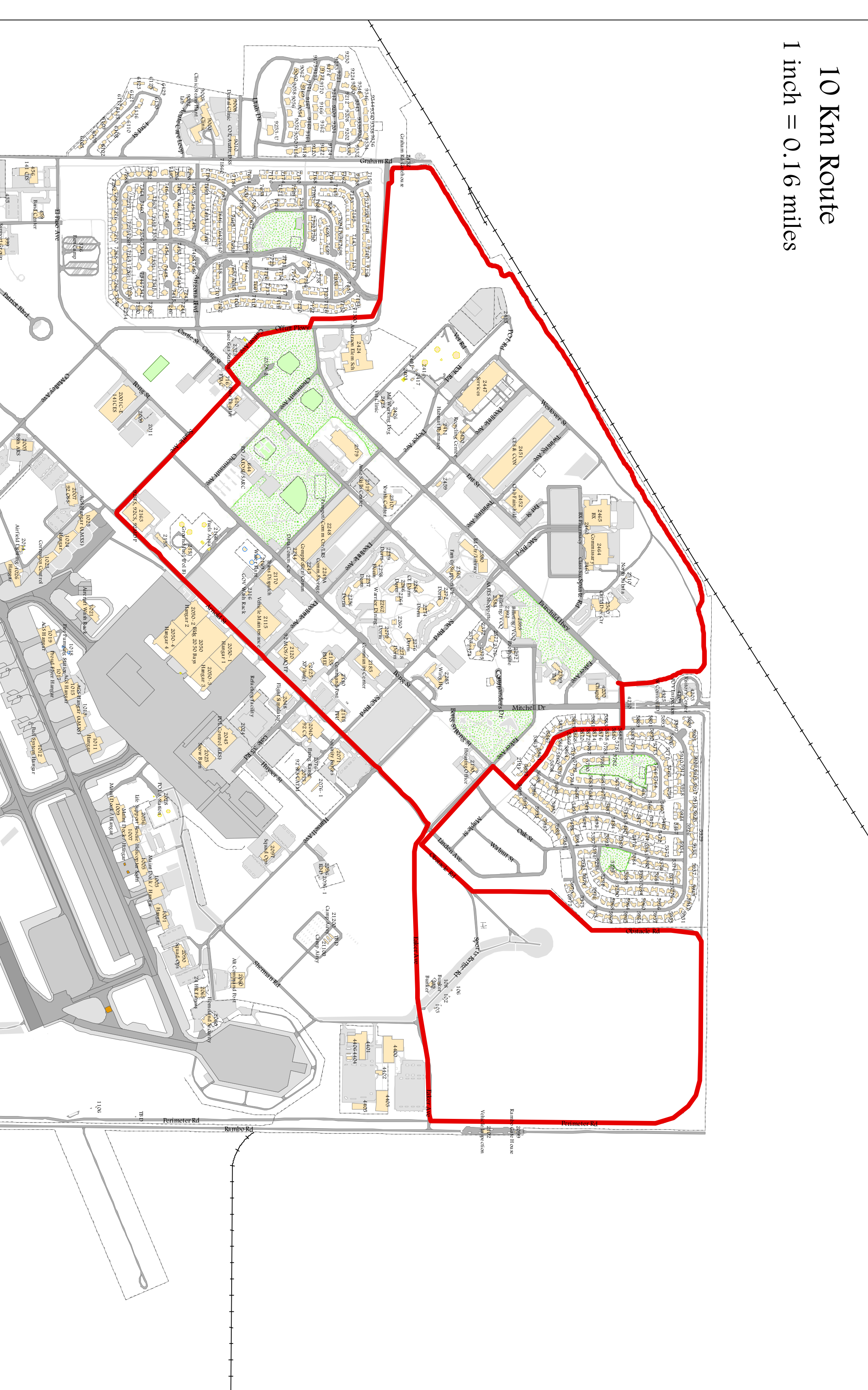
1.75 Mile Route  
1 inch = 0.1 miles



Perimeter/Hospital Run - 4 Miles  
1 inch = 0.14 miles



10 Km Route  
1 inch = 0.16 miles



## For Your Safety

- Wear reflective gear during hours of darkness.
- Jog on jogging path or sidewalks.
- Jog facing traffic on the side of the road when there is no sidewalk.
- Remove head phones when crossing the streets or running on roads
- Cross at cross walks where possible.
- Do not walk, jog, run, skate, or skateboard on roadways of high density and peak periods (DODI 6055.4)





UNITED STATES AIR FORCE BASE  
FAIRCHILD INN – FAIRCHILD AFB  
Television Channel Line Up

General Viewing (Local channels may vary)

3. Channel Guide
4. Local Marketing Channel
5. CBS – KREM **HD**
6. CBS – KLEW **HD**
7. NBC-KHQ **HD**
8. PBS – KSPS **HD**
9. ABC – KXLY **HD**
10. PBS – KWSU **HD**
11. CW – KSKN **HD**
12. FOX-KAYU **HD**
13. Galavision
14. Univision
15. Cartoon Network
16. Nickelodeon
17. Teen NICK
18. NICK Jr.
19. Baby First TV
20. Disney Junior
21. Disney Channel
22. Disney XD
23. Freeform
24. TV Land
25. Hallmark Channel **HD**
26. ReelzChannel **HD**
27. Lifetime **HD**
28. Ovation **HD**
29. Bravo **HD**
30. A&E **HD**
31. FX **HD**
32. FXX **HD**
33. BBC America **HD**
34. TLC **HD**
35. TBS **HD**
36. TNT **HD**
37. USA Network **HD**
38. Animal Planet **HD**
39. NASA TV
40. Discovery **HD**
41. National Geographic **HD**
42. MT **HD**
43. History Channel **HD**

44. ID: Investigation Discovery **HD**
45. Tru TV
46. Food Network **HD**
47. HGTV **HD**

News & Information

48. CNN **HD**
49. CNN Headline News **HD**
50. FOX News **HD**
51. C-SPAN
52. C-SPAN 2
53. Bloomberg Television
54. MSNBC **HD**
55. CNBC **HD**
56. Weather Nation **HD**

Sports & Entertainment

57. ESPN **HD**
58. ESPN 2 **HD**
59. ESPNEWS **HD**
60. ESPN U **HD**
61. Big Ten Network **HD**
62. Fox Sports 1 **HD**
63. Pursuit Channel

Music & More!

64. AXS **HD**
65. AUDIENCE **HD**
66. LINK
67. MTV **HD**
68. MTV2
69. BET **HD**
70. VH1 **HD**
71. CMT **HD**
72. PAR **HD**
73. SyFy **HD**
74. E! Entertainment **HD**
75. Comedy Central **HD**

Movies

76. AMC **HD**
77. Hallmark Movie Channel **HD**
78. Turner Classic Movies **HD**

# SPOKANE LOCAL RADIO STATIONS

## FM STATIONS

Frequency	Callsign	Format
89.9 FM	<u>KVFS-LP</u>	Variety
89.9 FM	<u>KYMS</u>	Religious
91.5 FM	<u>KUBS</u>	Country
92.9 FM	<u>KZZU</u>	Modern AC
93.7 FM	<u>KDRK</u>	Country
94.5 FM	<u>KHTQ</u>	Rock
96.1 FM	<u>KIIX</u>	Country
96.9 FM	<u>KEZE</u>	Rhythmic CHR
98.1 FM	<u>KISC</u>	Adult Contemporary
98.9 FM	<u>KKZX</u>	Classic Rock
99.9 FM	<u>KXLY</u>	Adult Alternative
101.1 FM	<u>KEYF</u>	Classic Hits
101.9 FM	<u>KTSL</u>	Christian Contemporary
102.3 FM	<u>KICR</u>	Country
103.1 FM	<u>KCDA</u>	Hot AC
103.9 FM	<u>KBBD</u>	Classic Hits
104.9 FM	<u>KEEH</u>	Christian Contemporary
105.7 FM	<u>KZBD</u>	CHR
107.9 FM	<u>KMBI</u>	Religious

## AM STATIONS

590 AM	<u>KQNT</u>	Talk
700 AM	<u>KXLX</u>	Sports
790 AM	<u>KJRB</u>	Sports
840 AM	<u>KMAX</u>	News/Talk
920 AM	<u>KXLY</u>	Talk
1050 AM	<u>KEYF</u>	Adult Standards
1080 AM	<u>KVNI</u>	Oldies
1240 AM	<u>KCVL</u>	Country
1280 AM	<u>KZFS</u>	Talk
1330 AM	<u>KMBI</u>	Religious
1510 AM	<u>KGA</u>	Sports

## Fairchild Air Force Base, 1942

Fairchild AFB is named in honor of General Muir Stephen Fairchild (1894-1950) a native of Washington. General Fairchild received his wings and commission in 1918, and served as a pilot during World War I. He held various air staff positions during World War II. General Fairchild received his fourth star in 1948, and died on March 17, 1950 while serving as Vice Chief of Staff, USAF. The base was named Fairchild in memory of the general. The formal dedication ceremony was July 20, 1951.

Fairchild AFB was built in 1942 and is a key part in the nation's defense strategy. When the nation was looking for a base to be built, there were two Washington cities in competition: Everett and Spokane. When the team choosing the base came to Spokane, the city offered land to the United States Military. James A. Ford, a managing secretary of Spokane chamber of Commerce, made the offer and Frank Sutherlin, who was in fact the Mayor of Spokane at the time, helped with the offer. After some time Spokane was chosen for the base because it had better weather conditions and had the Cascade mountains that served as a natural barrier. The city leaders had raised \$125,000 dollars from local businesses and public minded citizens and bought 1,400 acres for the construction of the base just west of the city. From 1942 until 1946 the Spokane Army Air Depot served as a repair depot for damaged aircraft coming from the pacific theater.



General Muir Stephen Fairchild



L93-18.213 - A typical B-52 crew of the 92nd Bombardment Wing at Fairchild

military aircrafts ever built arrived at the base. Then later in 1956 the wing began a conversion that then brought the B-52 Stratofortress to Fairchild. The 92nd became an air refueling squadron with the KC-135 Stratotanker in 1957. Fairchild also helped with bombing operations in Vietnam and other wars. Recently Fairchild served with operations in the Middle East like Desert Storm and Desert Shield, and currently in Iraq and Afghanistan. The 92 Refueling Wing services planes all over the world. Fairchild Air Force Base is a valued member of the Spokane community.

Starting in the summer of 1947, the base was transferred to a Strategic Air Command, and was assigned to the 15th Air Force. Then later came 92nd and 98th bomb groups arrived at the base, the two units flew the most advanced bomber in their days the B-29 super fortress. When the war in Korea started both bomber units were deployed to Japan and Guam. After a few months General Douglas Mac Arthur ordered that the 92nd come back to the states while the 98th stayed back in the west. Later the 98th was relocated to a base in Nebraska. Then the 92nd was re-assigned to the 92nd bombardment wing.

Actually when the name change dedication ceremony was taking place, the first B-36 Peacemaker, the largest